

# Dell Peripheral Manager

## User's Guide



# Notes, Cautions, and Warnings

---



**NOTE:** A NOTE indicates important information that helps you make better use of your computer.



**CAUTION:** A CAUTION indicates potential damage to hardware or loss of data if instructions are not followed.



**WARNING:** A WARNING indicates a potential for property damage, personal injury, or death.

Copyright © 2021-2022 Dell Inc. or its subsidiaries. All rights reserved. Dell, EMC, and other trademarks are trademarks of Dell Inc. or its subsidiaries. Other trademarks may be trademarks of their respective owners.

2022- 05  
Rev. A06

# Contents

<b>Overview .....</b>	<b>5</b>
<b>Download and installation.....</b>	<b>6</b>
<b>User interface.....</b>	<b>7</b>
<b>General features .....</b>	<b>8</b>
<i>Device Status .....</i>	<i>8</i>
<i>Software updates.....</i>	<i>9</i>
<b>Keyboard and mouse features.....</b>	<b>10</b>
<i>Mouse settings .....</i>	<i>10</i>
DPI setting .....	10
Primary Mouse Button .....	10
<i>Assignable Actions .....</i>	<i>11</i>
<i>Pairing a device .....</i>	<i>12</i>
<i>Unpairing a device.....</i>	<i>13</i>
<b>Webcam features.....</b>	<b>14</b>
<i>First-time Walkthrough .....</i>	<i>14</i>
<i>Camera Feed/Presets .....</i>	<i>15</i>
<i>Configuring Your Webcam .....</i>	<i>16</i>
<i>Camera Control .....</i>	<i>16</i>
<i>AI Auto-framing.....</i>	<i>17</i>
<i>Color and Image .....</i>	<i>17</i>



<i>Presence Detection</i> .....	18
<i>Capture</i> .....	19
<i>Audio</i> .....	20
<i>FAQ related to webcam</i> .....	21
<b>Speakerphone and soundbar features</b> .....	<b>24</b>
<i>Speaker Preset</i> .....	24
<i>Audio Settings</i> .....	24
<i>Sounds &amp; Notifications</i> .....	25
<i>Additional Information</i> .....	26
<b>Pen features</b> .....	<b>26</b>
<i>Pairing</i> .....	27
<i>Tip/Tilt Sensitivity</i> .....	27
<i>Barrel Buttons</i> .....	28
<i>Radial Menu</i> .....	29



# Overview

---

Dell Peripheral Manager supports the following:

- Pair/unpair devices through RF or Bluetooth.
- Assign shortcuts to customizable action buttons.
- View device information, such as firmware version and battery status.
- Configure webcam and use its features.
- Configure speaker phones and pen
- Upgrade software and device(s) using latest updates.



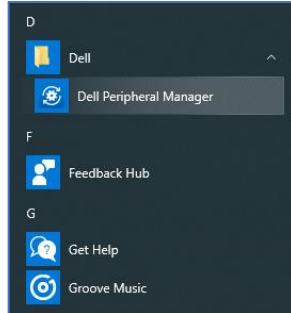
**NOTE:** Dell Peripheral Manager user guide is common to all supported Dell peripherals. For features specific to the device, please refer to the product user guide.



# Download and installation

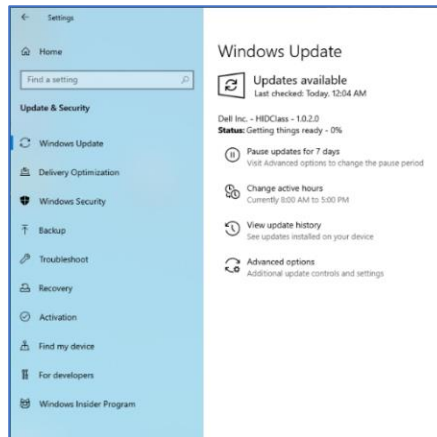
---

When you connect the device to your computer for the first time, Dell Peripheral Manager is downloaded and installed automatically through Windows Update.



**NOTE:** If Dell Peripheral Manager does not appear within a few minutes, you can:

- check for updates and manually install the software or



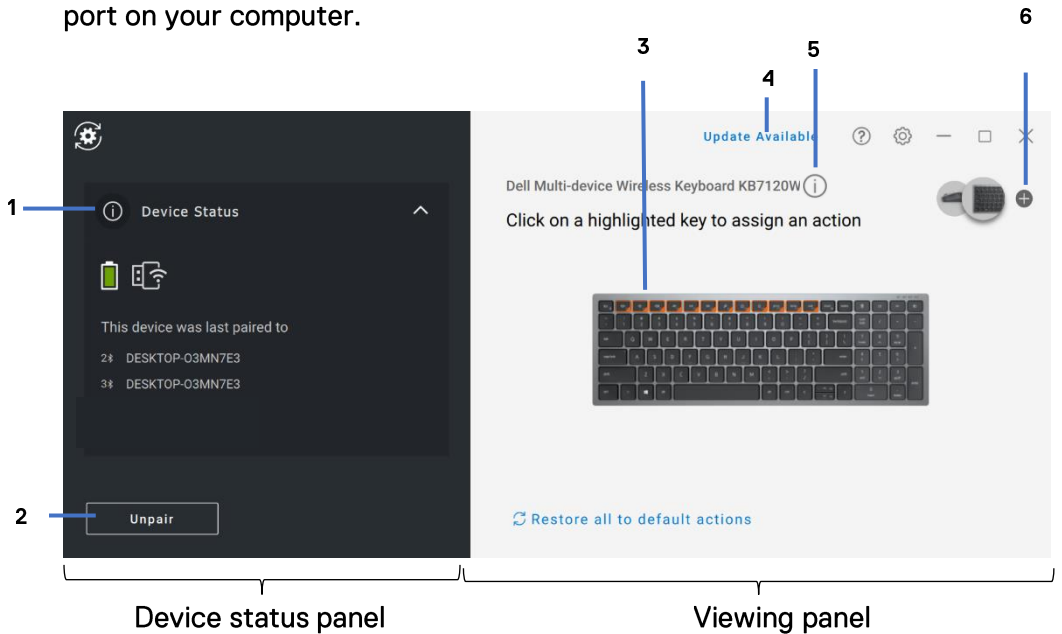
- download the Dell Peripheral Manager application from <https://www.dell.com/support/dpem>.



# User interface

Dell Peripheral Manager opens automatically when the device is connected to an active USB port on your computer for the first time. You can also click **Start Menu > Dell > Dell Peripheral Manager** to open the user interface.

The Dell Universal USB receiver that is shipped with the wireless device is pre-paired for use with it. You can access the device in the Dell Peripheral Manager window after connecting the USB receiver to an active USB port on your computer.



- 1 Device status
- 2 Unpairing a device
- 3 Assign action (highlighted keys)

- 4 Software update notification
- 5 Firmware version
- 6 Pairing a device

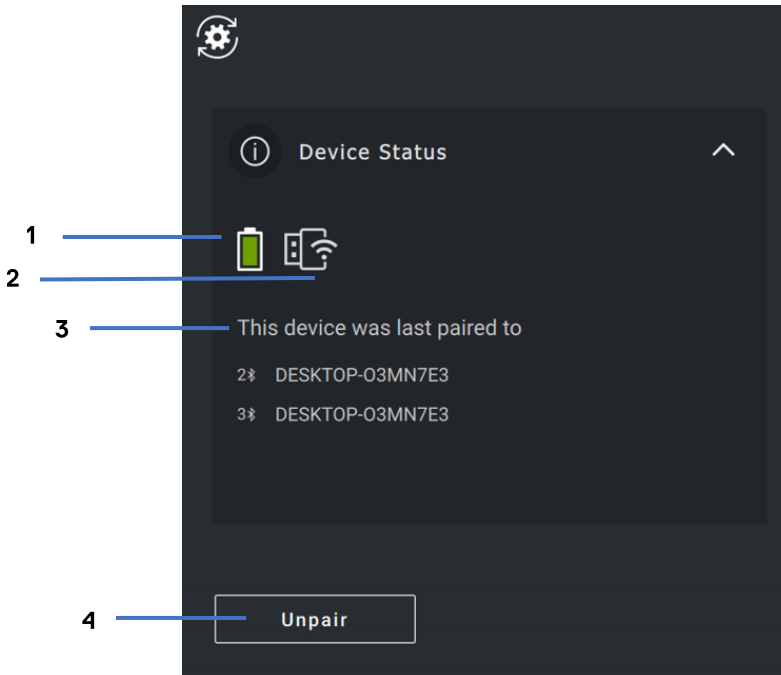


# General features

---

## Device Status

You can view the following details on the **Device Status**:



- 1 Battery life indicator
- 2 Connectivity indicators
- 3 Bluetooth pairing history
- 4 Unpair device



**NOTE:** You can move the pointer over the RF connectivity indicator to view the USB receiver version.



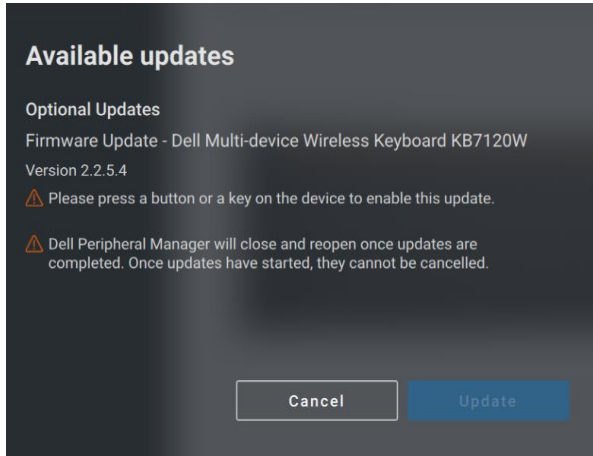


## Software updates

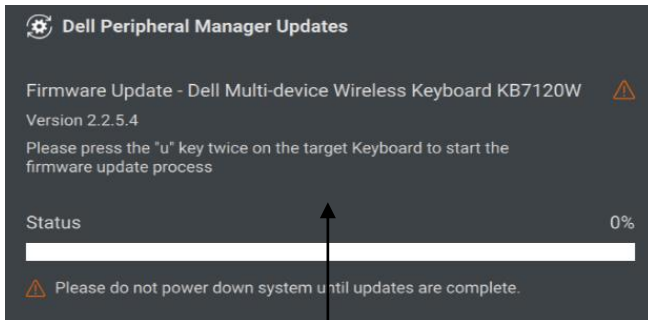
The Software update feature is used for upgrading:

- The software running on the peripheral device.
- The Dell Peripheral Manager application itself.

Click **Update Available** notification in the main window to view a list of available updates.



**NOTE: Software update for RF devices requires active user input.**



**Follow the prompt!**



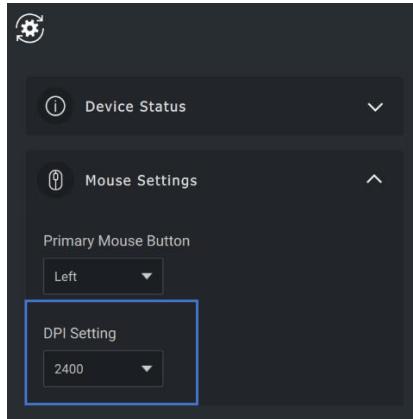
# Keyboard and mouse features

---

## Mouse settings

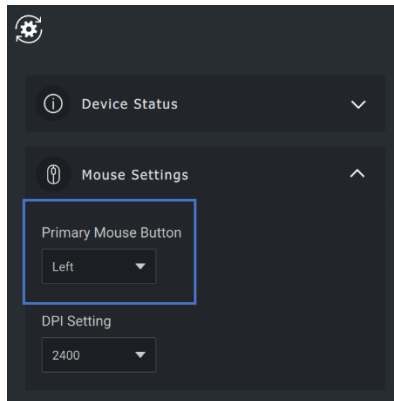
### DPI setting

You can expand Mouse settings in the device panel to change or view DPI setting and to adjust. Select the required setting from the drop-down list.



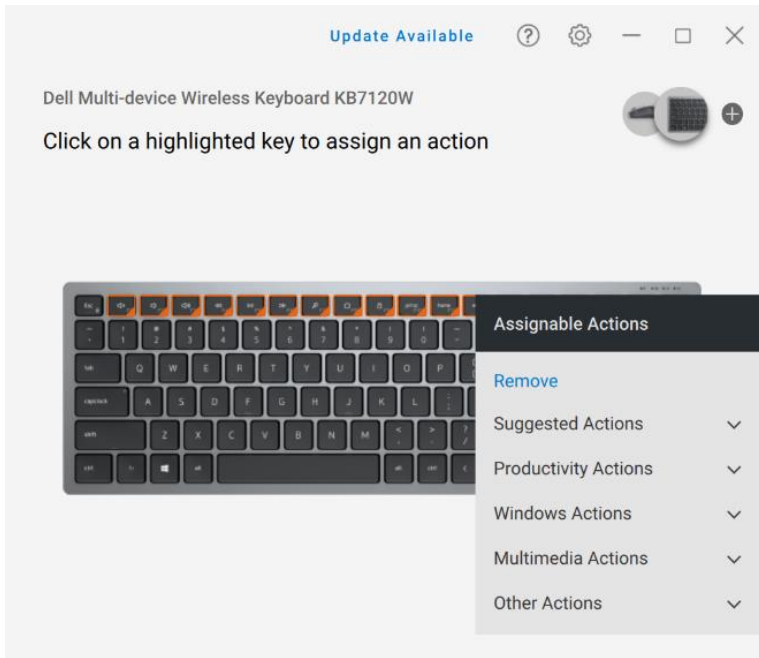
### Primary Mouse Button

You can expand Mouse settings in the device panel to change or view primary mouse button. Select the required setting from the drop-down list.



## Assignable Actions

Programmable actions can be assigned to highlighted buttons or keys.



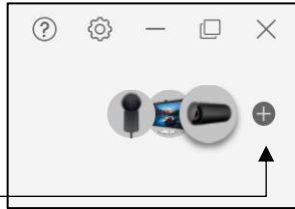
The user interface is simple and intuitive.

- The orange-bordered buttons represent the buttons for which we can assign programmable actions.
- An orange “flag” at the bottom-right corner of a button indicates that a custom action is assigned.

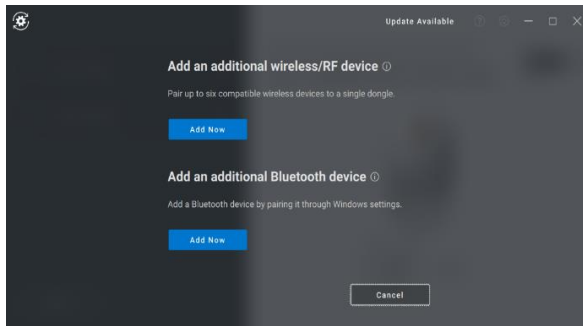
To assign an action, click on a highlighted button or key. The “Assignable Actions” box provides a list of selectable actions. After choosing an action, pressing the corresponding button or key will trigger the action.

## Pairing a device

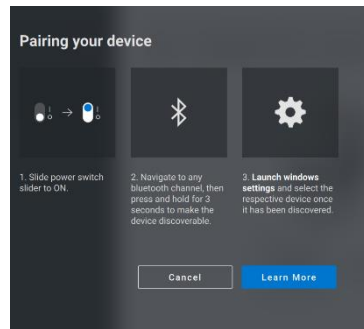
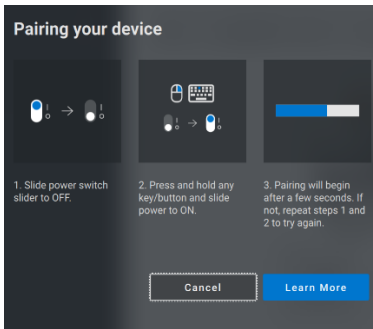
Using the Dell Peripheral Manager, you can pair additional devices through Bluetooth or RF.



Click on the + sign on the viewing panel. A dialog box appears for connecting a new device.

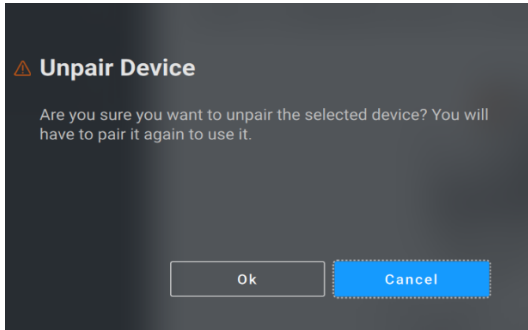


Follow the on-screen instructions for pairing a new device using both RF and Bluetooth options.



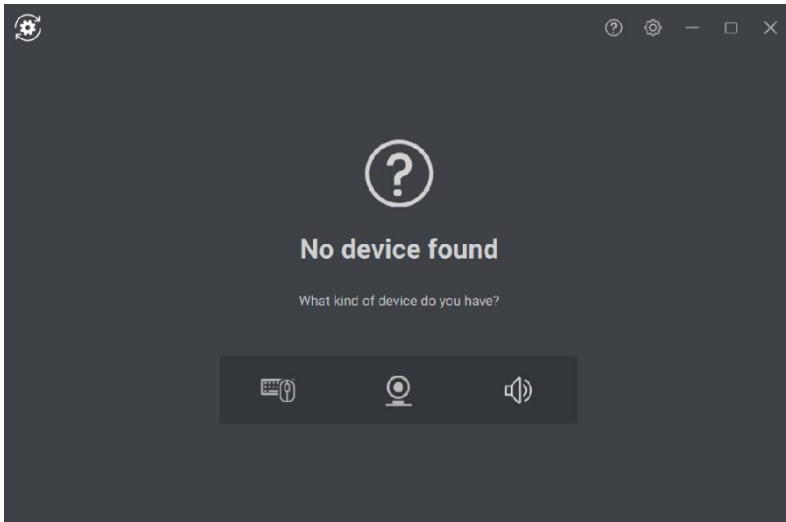
## Unpairing a device

The **Unpair Device** dialog box appears when you click **Unpair**.



**CAUTION:** The device can no longer be used after unpairing. You will need an additional device to pair with an input device again. For example, ensure that a backup mouse or other input device is available.

When there are no Dell devices connected, the Dell Peripheral Manager window is displayed as shown in the following image:

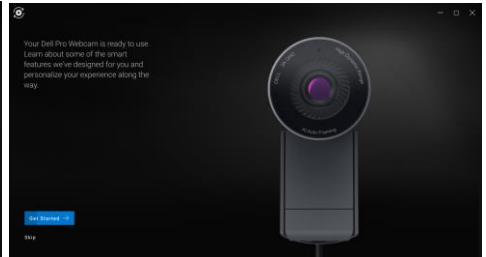


# Webcam features

---

## First-time Walkthrough

When your webcam is connected for the first time, the Dell Peripheral Manager application opens automatically. The application provides on-screen instructions and a walkthrough to personalize your webcam experience along the way.

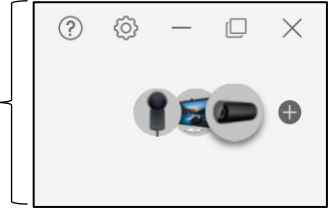
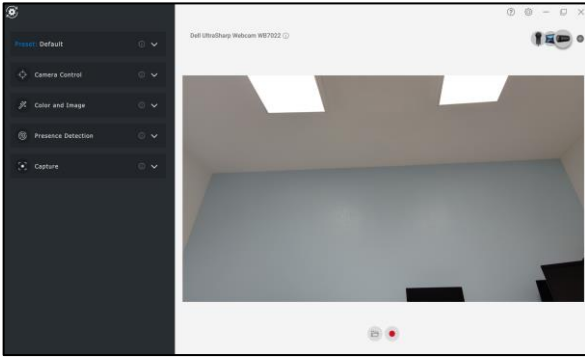


On completion of the walkthrough, you will be taken to the main screen, where a complete list of configurable items becomes available.



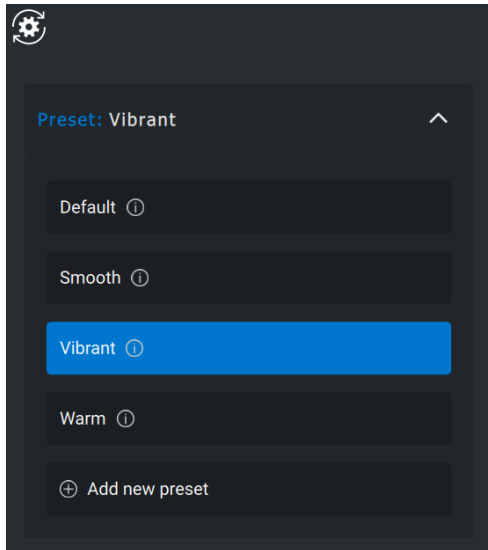
## Camera Feed/Presets

A live camera feed is shown on the viewable panel whenever the Dell Webcam is connected to the computer.



Device Selection Panel

You can select a preset that suits your style depending on how you want the image to appear on the camera.



You can also create a custom preset.



# Configuring Your Webcam

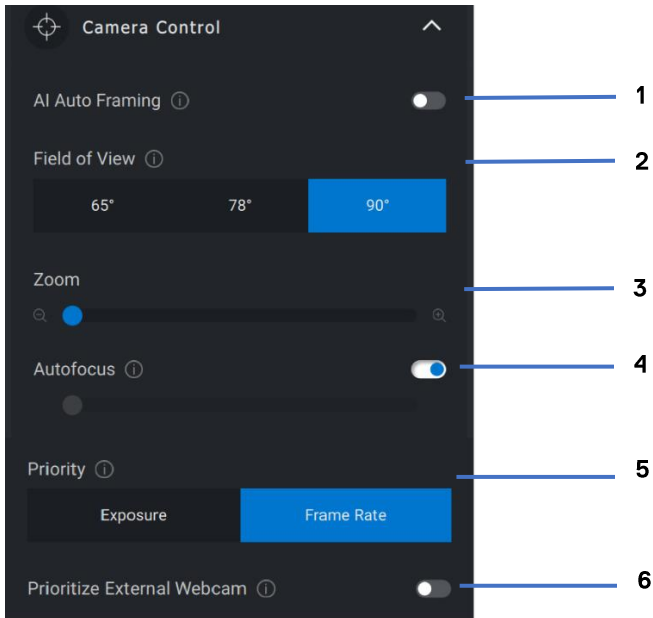
There are various models of Dell Webcam, each with its own set of features. To determine whether your webcam supports a feature, look for the icon indicating your camera model beside the feature name:



## Camera Control



You can adjust AI Auto Framing, Field of View, Zoom, Autofocus, Priority and Prioritize External Webcam settings from this section of the user interface.



- 1 AI Auto-framing
- 2 Field of View (FOV)
- 3 Zoom
- 4 Autofocus
- 5 Priority (Exposure/Frame Rate)
- 6 Prioritize External Webcam

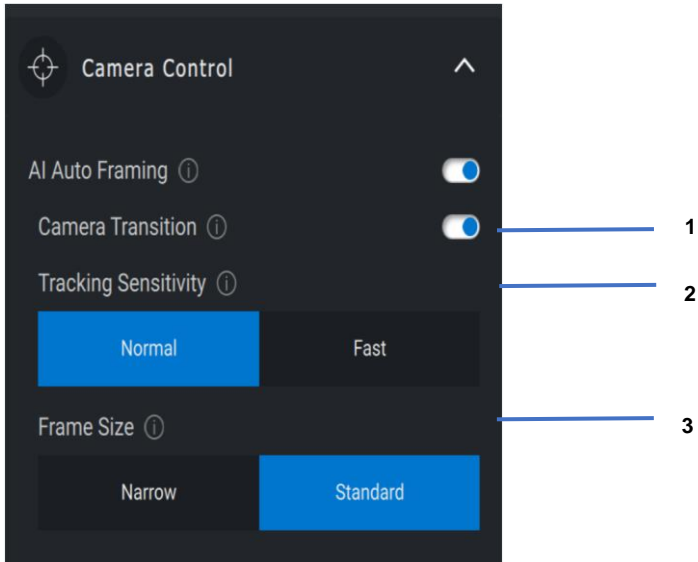




## AI Auto-framing



AI Auto-framing has 3 different customizations. Users can adjust Camera Transition, Tracking Sensitivity and Frame Size from this section of the user interface



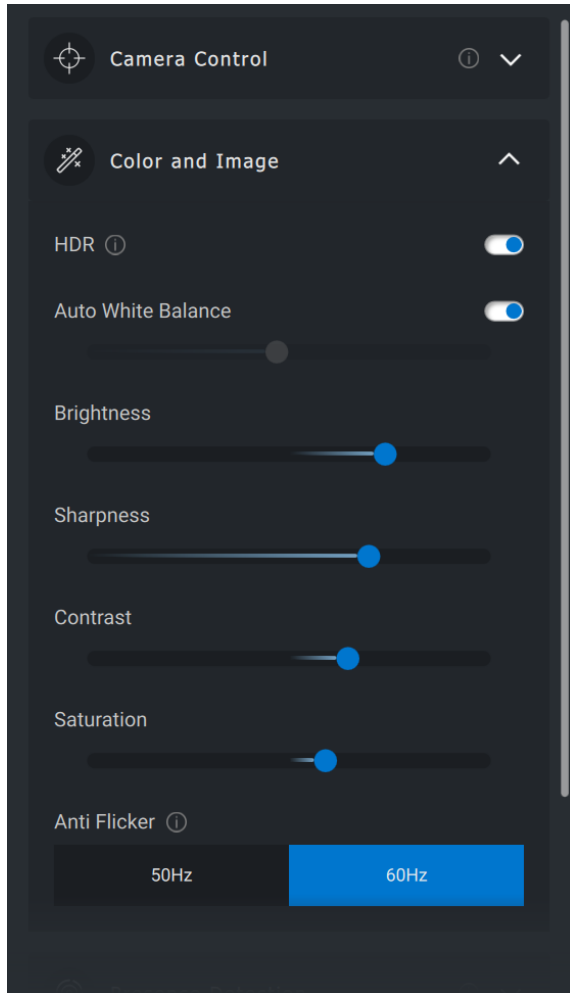
1. Camera Transition – Controls how the camera tracks the person
2. Tracking Sensitivity – Allows user to adjust timing (on a slider) for how fast they want tracking to take place
3. Frame Size – Allows user to set positioning and sizing of face relative to the frame

## Color and Image



It is possible to adjust the automatic correction for optimal image quality at various lighting conditions using HDR (High Dynamic Range). Other settings like Auto White Balance, Brightness, Sharpness, Contrast, Saturation, and Anti-Flicker settings for the Dell Webcam makes it easier to get an image of your choice.





## Presence Detection

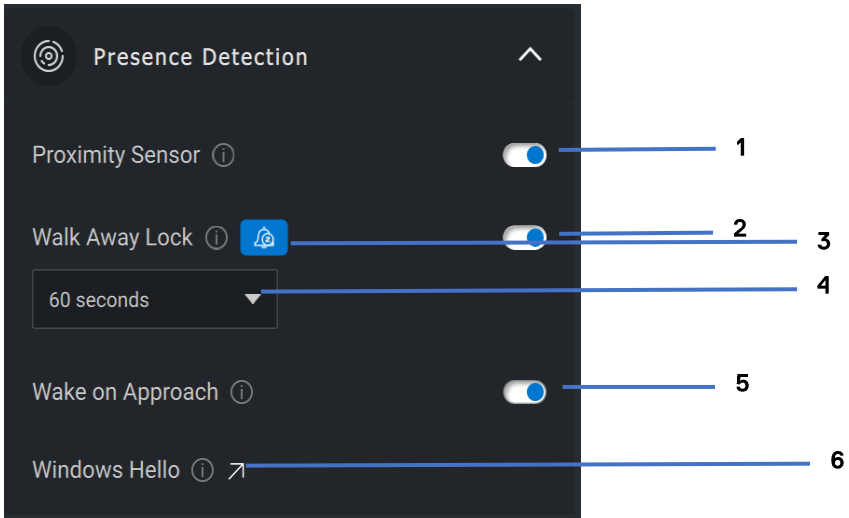


Your camera comes equipped with a proximity sensor that detects your presence when you are in the field of view of the sensor.

- It can respond to your presence by waking up your screen when you are in the field of view (Wake on Approach) .



- It can lock the screen when you walk away (Walk Away Lock). The timing for Walk Away Lock can be configured using the drop-down box under the Walk Away Lock setting.
- These settings are enabled when the proximity sensor is enabled in the user interface.
- The Walk Away Lock setting can be temporarily disabled for a certain period by using the “Snooze” option in the user interface.



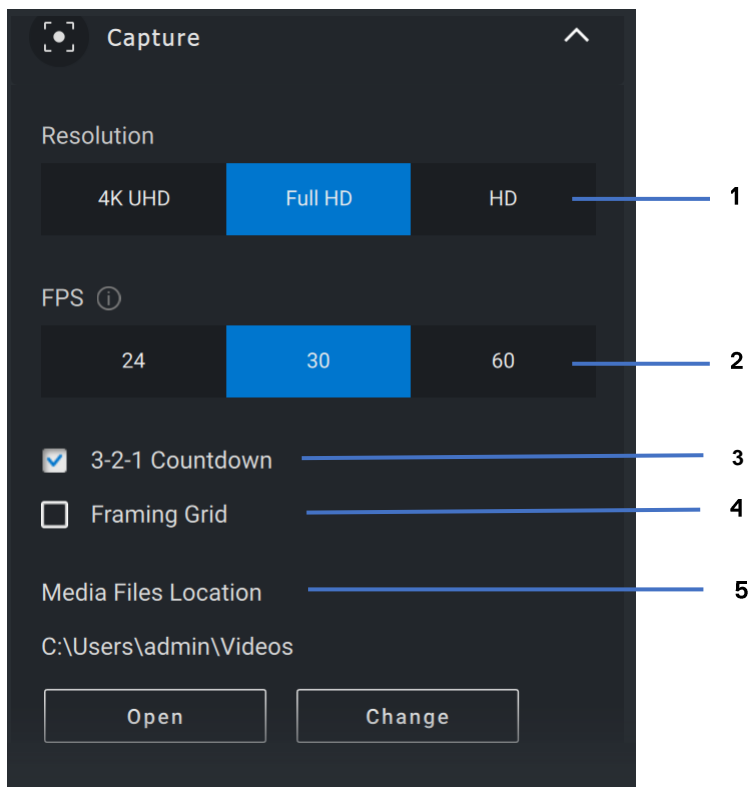
- |   |                           |   |                          |
|---|---------------------------|---|--------------------------|
| 1 | Proximity Sensor          | 4 | Timer for Walk Away Lock |
| 2 | Walk Away Lock            | 5 | Wake on Approach         |
| 3 | Snooze for Walk Away Lock | 6 | Windows Hello            |

## Capture



The Dell Webcam’s Capture settings can be tweaked to achieve the ideal recording experience by adjusting the frames per second (FPS) and resolution properties. The Media Files location is also configurable.





- 1 Resolution
- 2 Frames per second
- 3 Countdown for capture
- 4 Framing Grid
- 5 Media Files location

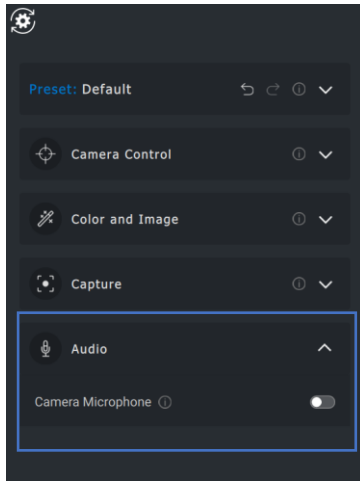
## Audio



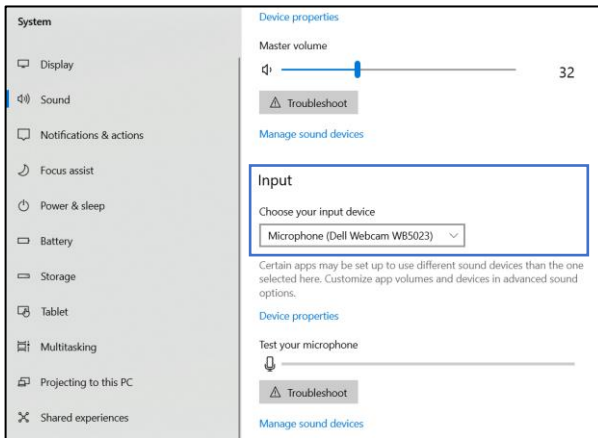
Some Dell Webcam models have a built-in microphone, providing finer audio quality during video recording or VoIP sessions.

To enable the built-in microphone, toggle the corresponding option.





**NOTE:** You can verify the audio enablement under Windows Settings. Navigate to *Computer -> Sound -> Input*.



## FAQ related to webcam

- Why does DPM not show 4K UHD option in the user interface?

In order for the webcam to output 4K resolution, USB 3.0 is required. If USB 3.0 connection is not detected, then you can



experience this issue. Check if your computer, monitor or hub has USB 3.0 port and connect the webcam to it.

- Why does DPM not detect my camera when connected via a docking station?

It is possible that the docking station is not delivering sufficient power via USB, or the firmware on the dock may be outdated. Ensure that the dock firmware is updated to the latest version and the USB port on the deck can support full USB 3.0 power.

- Why does DPM not show Presence Detection features?

This feature is only supported on Dell computers. If this issue occurs on a Dell computer, check that your computer BIOS and drivers are updated to the latest versions from the Dell Support site.

- Why is the Internal webcam or other webcam connected to my computer disabled?

To support Windows Hello facial recognition using the external webcam, Dell Peripheral Manager software may have disabled the internal webcam or other non-Dell webcams. To use other webcams please deselect the "Prioritize External Webcam" option under the "Camera Control" section in DPM.

- Why does my computer lock down shortly after a countdown is initiated?

Your webcam is equipped with a presence detection sensor. If the sensor does not detect human presence in its field of view for a specified period of time, it can lock the computer. This feature is the "Walk Away Lock" and can be enabled/disabled under "Proximity Detection" in Dell Peripheral Manager.

**Note:** Certain models of Dell computer are equipped with a built-in proximity sensor. In such case, it is recommended to disable



Proximity Detection feature under Dell Peripheral Manager to avoid conflicting behavior.

If Proximity Detection is enabled, do not cover the lens of the webcam or else the webcam will not be able to detect human presence.

- Why am I not able to install Dell Peripheral Manager on my computer?

The Dell Peripheral Manager application is only supported on Windows 10 (or higher) 64-bit operating computer. It is not supported on ARM-based PC's (e.g. Microsoft Surface Pro) due to underlying technology that uses Windows drivers.

- Why does my computer not activate “Wake on Approach” (WOA) even when I enter the Field of View (FOV) of the Proximity Sensor?

If the user has not left the FOV for more than 20 seconds before reappearing, then Wake on Approach is not triggered. Wake on Approach will also not work:

- on S3 computers with battery mode
  - if USB wake-up is not enabled under BIOS
  - if computer is in hibernate or shutdown mode
- Why am I unable to see the webcam feed after a quick hot-plug of the camera?

When the webcam is disconnected and reconnected too quickly, the Microsoft frame server is using the webcam resources and locks the device. In this state, no other application can access the webcam for 5-10 minutes. Please wait at least 10 seconds after unplugging the webcam before re-plugging it to the computer.

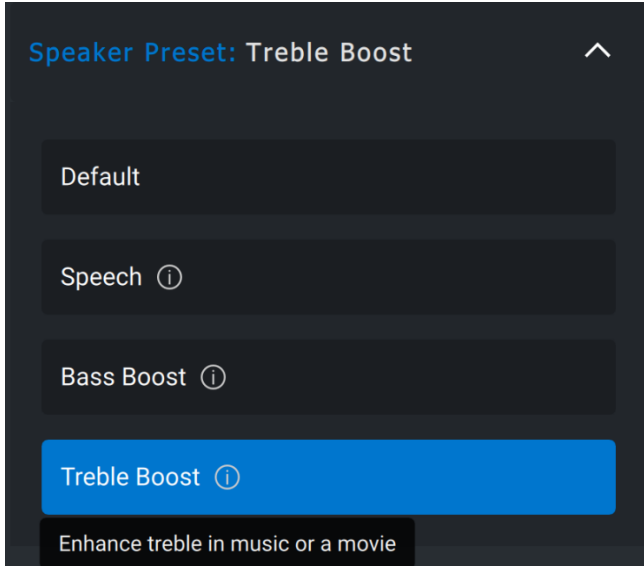


# Speakerphone and soundbar features

---

## Speaker Preset

You can select from speaker preset modes of Default, Speech, and Treble/Bass Boost, depending on the desired sound enhancements in your Dell Peripheral Manager supported speakerphone or soundbar.



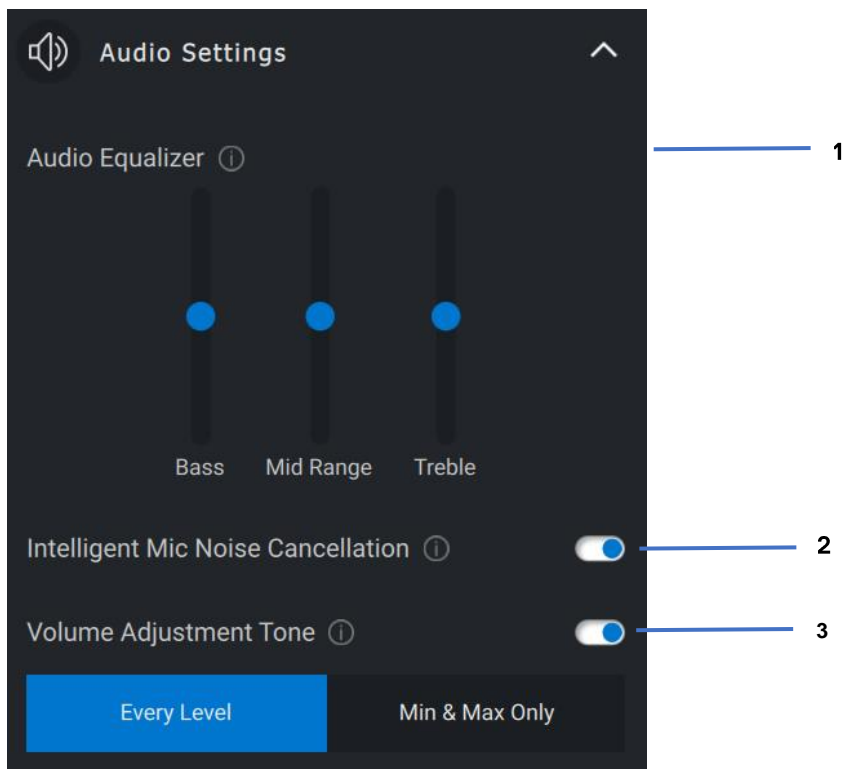
## Audio Settings

You can view or change the speakerphone or soundbar settings under **Audio Settings**. You can change the bass, mid-range and treble levels by moving the slider to achieve the desired audio range under Audio Equalizer. Turn on the intelligent microphone noise cancellation feature to remove any background noise to allow your voice to be clearly heard.

Sound can be played when volume is adjusted for every level or only for minimum and maximum levels under Volume Adjustment Tone setting.



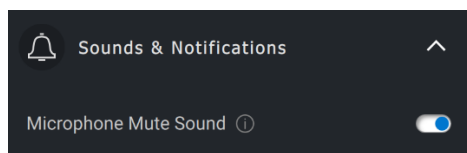




- 1 Audio Equalizer
- 2 Intelligent Mic Noise Cancellation
- 3 Volume Adjustment Tone

## Sounds & Notifications

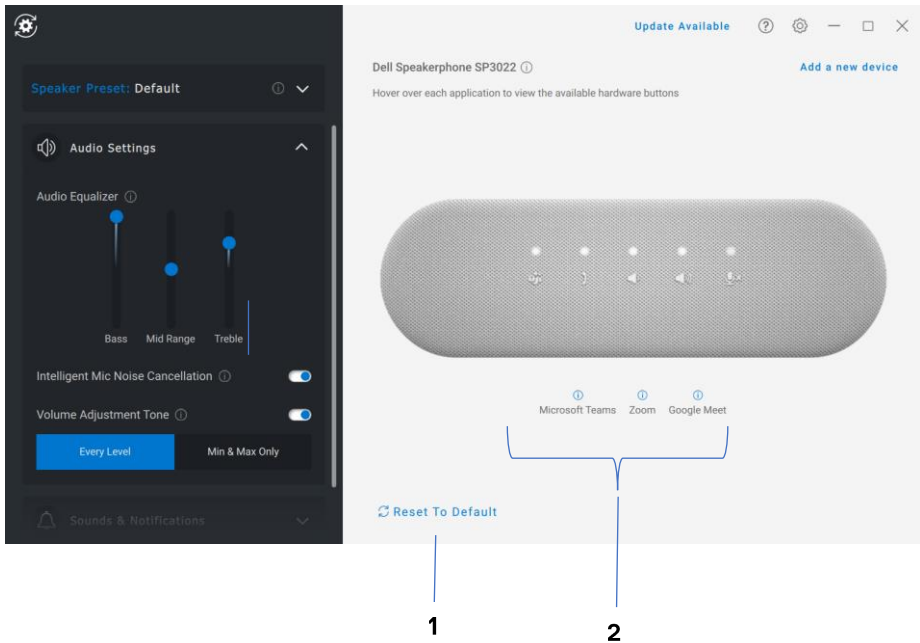
Turn on the Microphone mute sound notifications under Sounds and Notifications to play a sound when microphone is muted or un-muted.



## Additional Information

By selecting “Reset To Default” in the audio device user interface, it is possible to restore the default settings related to audio equalizer, intelligent microphone noise suppression, and volume level.

Your dell audio device also comes equipped with hardware buttons. Move the mouse pointer over each application in the device user interface to see which applications are available to use with each button. Some common applications that may be available are Microsoft Teams, Zoom, and Google Meet.



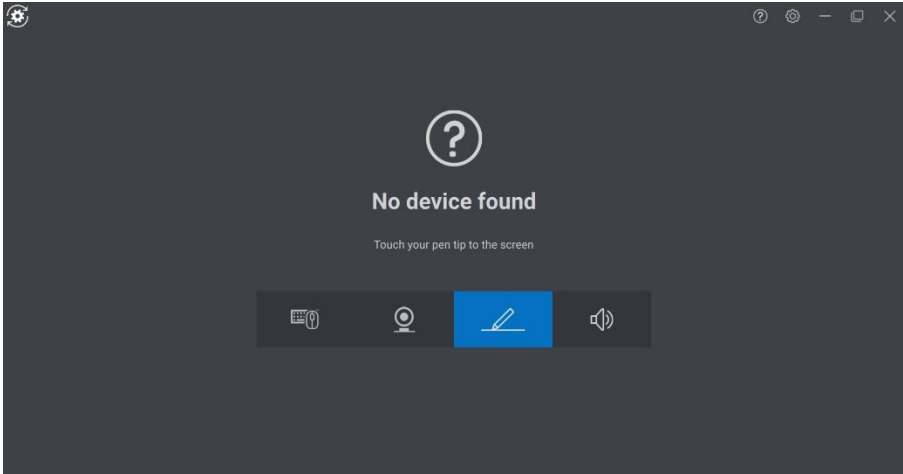
- 1 Reset To Default
- 2 Applications compatible with hardware buttons (hover-enabled)

## Pen features

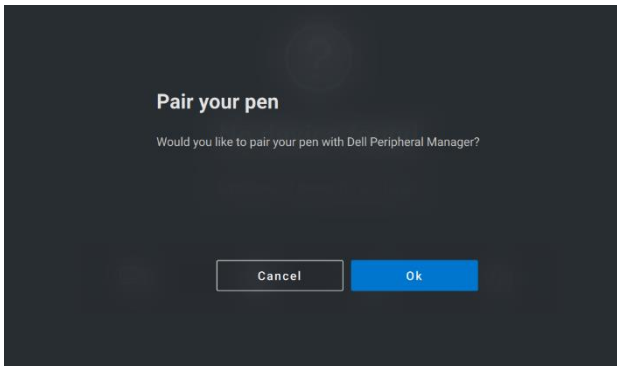


## Pairing

The pairing process for the Dell Active Pen is different from the other wireless devices.



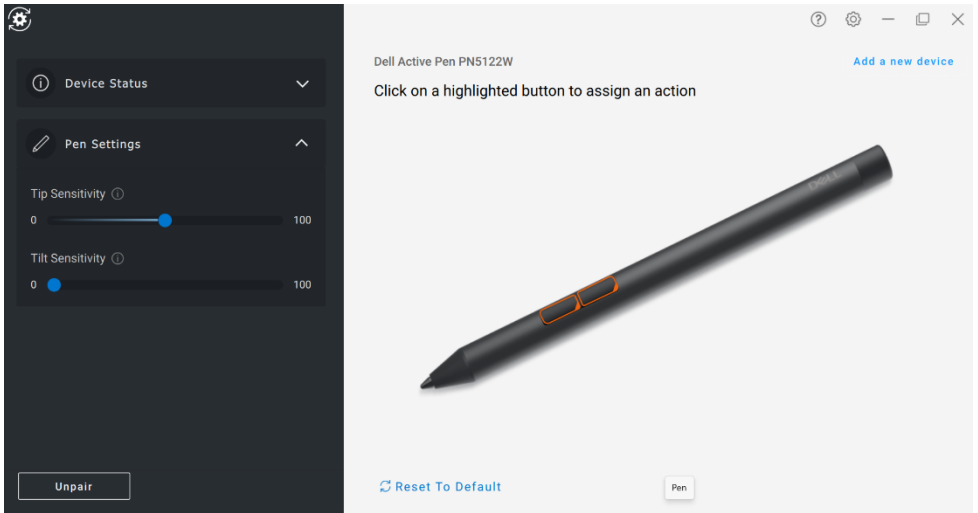
After selecting the appropriate icon, pressing the pen tip to the screen will activate a special pop-up window to allow pairing of the device.



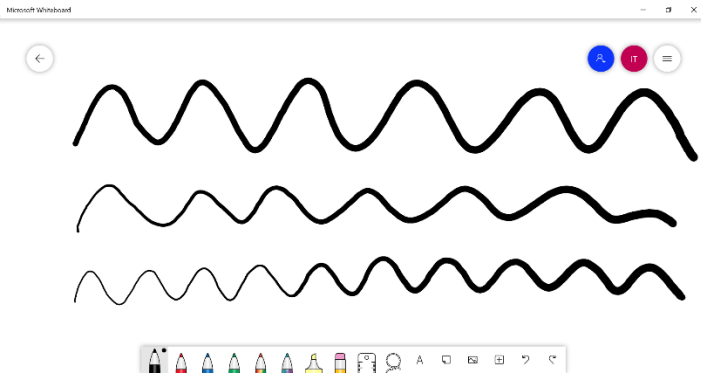
## Tip/Tilt Sensitivity

The Dell Active Pen has pressure (tip) and angle (tilt) detection capabilities. These settings can be adjusted via slider bars in the respective Dell Peripheral Manager panel.





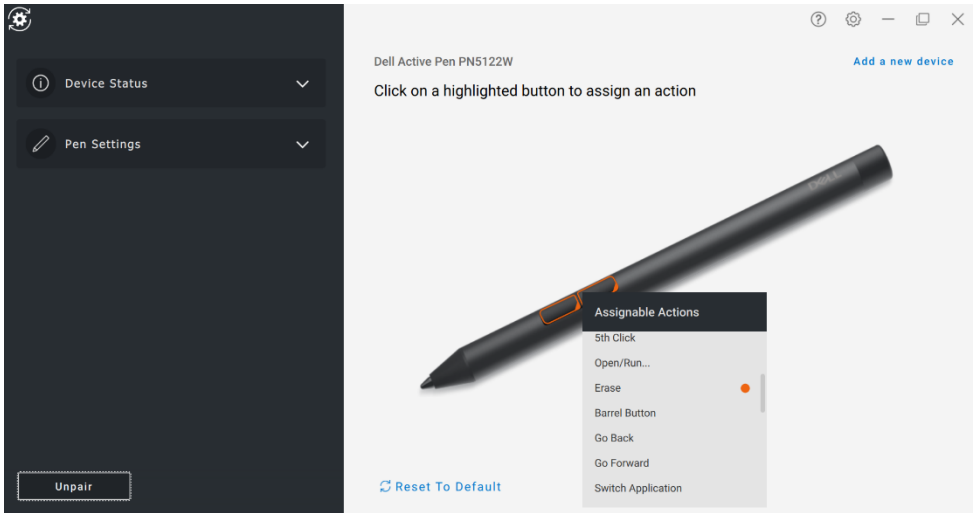
For supported applications such as Microsoft Whiteboard, the sensitivity settings will vary the brush width based on the amount of pressure and angle of the pen tip applied to the screen.



## Barrel Buttons

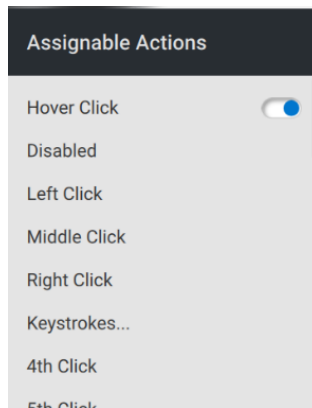
The buttons along the cylindrical core of the Dell Active Pen are called “barrel buttons.” Actions can be assigned to these buttons by clicking on the respective regions of the pen preview (outlined in orange).





 **NOTE: An assigned action will be indicated by an orange dot in the dropdown list.**

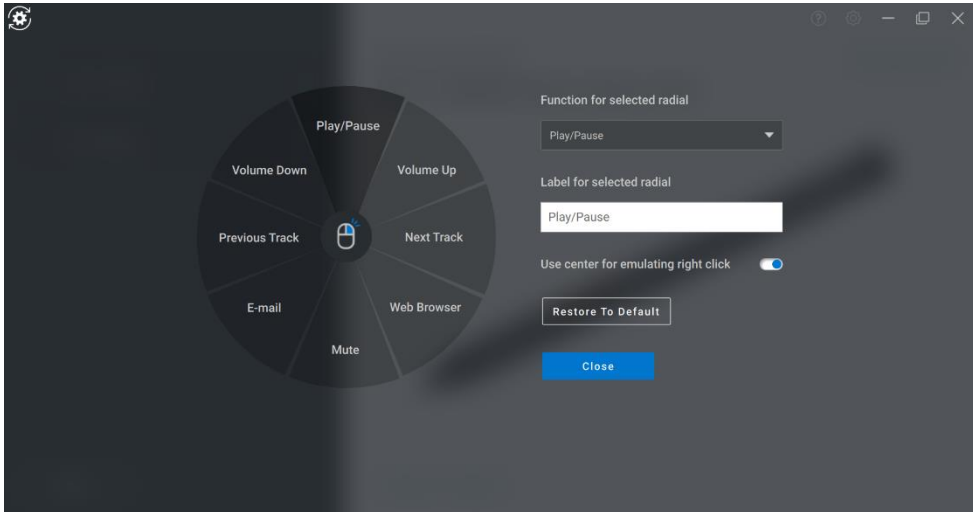
Of particular note is the “Hover Click” option, which enables the user to execute the assigned action with the pen tip hovering near the screen.



## Radial Menu

The Radial Menu is a special action that can be assigned to either barrel button. It allows several actions to be configured at once.





Now, pressing the barrel button will present the pinwheel as it was customized. Any region selected will execute the action as labeled.

